

Inside Exhibitors

All exhibits shall be in place and ready to show no later than

4:00 p.m., Monday, October 16th.

Inside Exhibitor move in will begin on Friday, October 13th, 2023 after 12:00 noon. We will be open on Saturday (likely Sunday as well) and we encourage you to beat the Monday mass crowd to move in your larger equipment. If you will be using your own lifting equipment, please fill out the Notification of Intent to use EAC form attached or on our web page.

Please refer to your contract for dimensions. Most are 10'L X 10'W" (or multiples) but some inside Building "A" are 10'L X 8'W' and two inside Building "G" are 8'L X 10'W.

Make sure that you and the setup personnel are familiar with the Rules and Regulations as specified in your contract. Pay particular attention to items six and seven. It's much easier to fix before set-up rather than just prior to show time. Our guidelines are very similar to IAEE Guidelines for display rules and drawings are attached to this memo. Please feel free to call us with any questions.

No electric heaters are allowed in exhibit spaces as they will overload electrical circuits.

Move In Times (Inside Exhibitors)

Friday, October 13, 2023 1:00 PM - 5:00 PM

Saturday, October 14, 2023 8:00 AM - 5:00 PM

Sunday, October 15, 2023 8:00 AM - 5:00 PM

Monday, October 16, 2023 8:00 AM – 4:00 PM

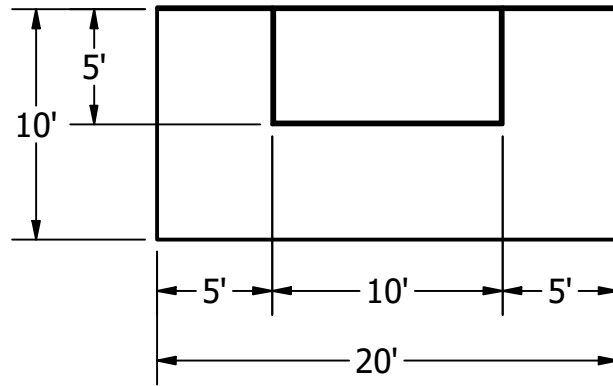
Move Out Times

Thursday, October 19, 2023 5:00 PM - 10:00 PM

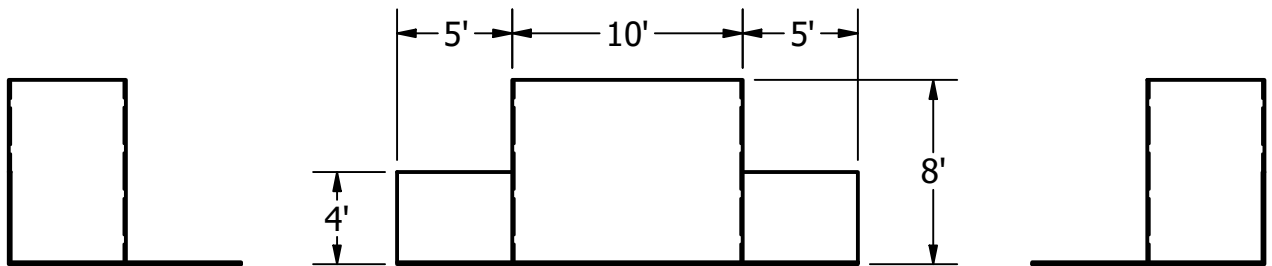
Friday, October 20, 2023 8:00 AM - 5:00 PM

Saturday, October 21, 2023 8:00 AM - 5:00 PM

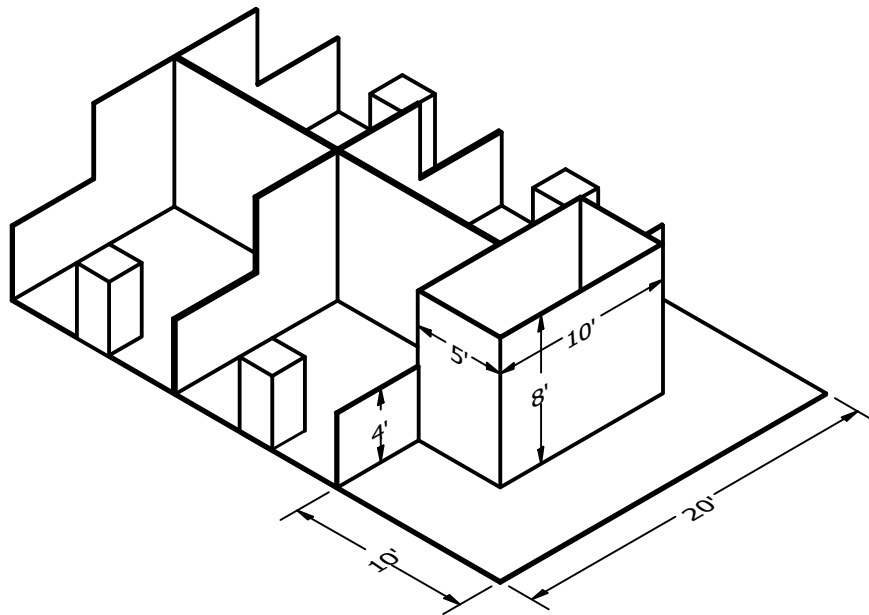
All exhibits and equipment must be removed from the PBIOS grounds and premises no later than 7:00 a.m., Sunday, October 22nd.



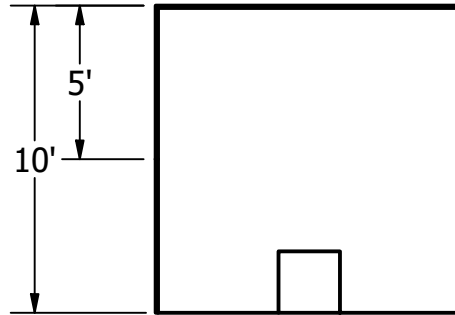
PLAN VIEW



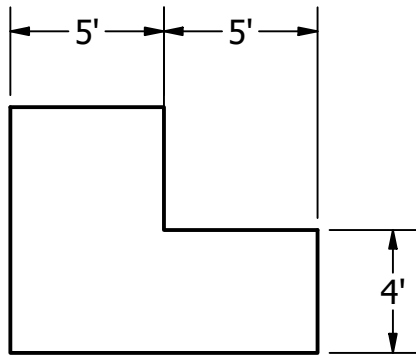
FRONT VIEW



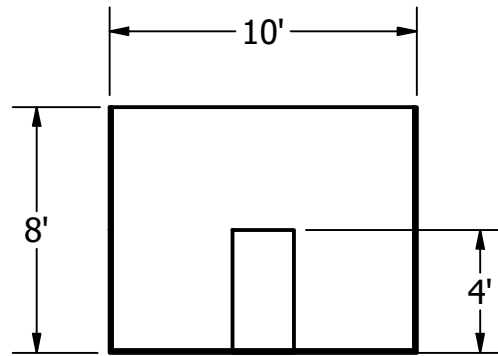
END-CAP BOOTH



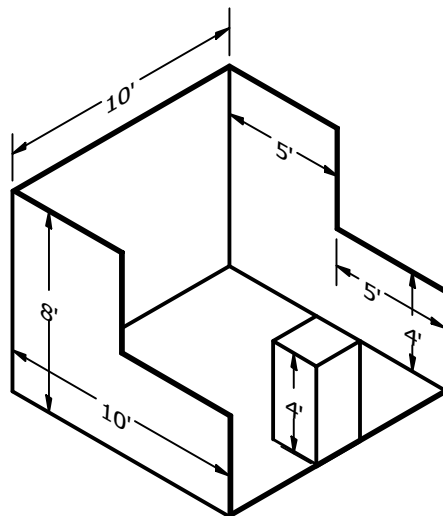
PLAN VIEW



LEFT SIDE VIEW



FRONT VIEW



LINEAR BOOTH